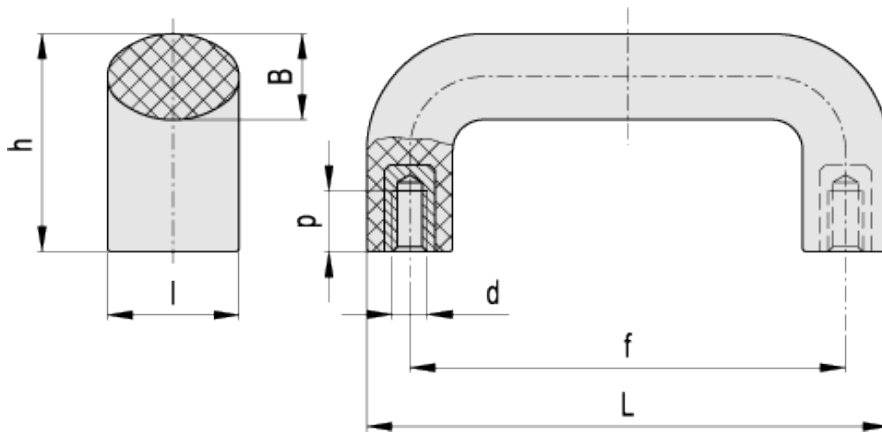


# M.843

Handles



ELESA Original design



## technical informations

### Material

High-resilience polyamide based (PA) technopolymer. Resistant to solvents, oils, greases and other chemical agents.

### Colour

Six standard colours: black, orange, grey, yellow, light-blue, red. Glossy finish.



Standard execution

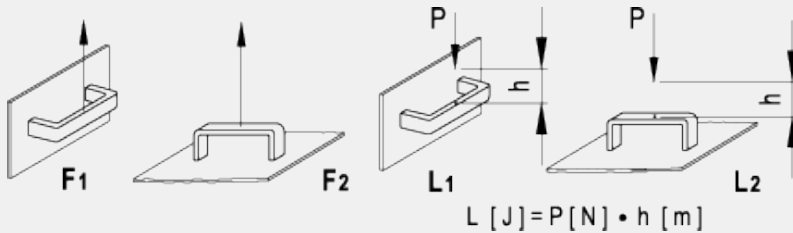
Brass bosses, threaded holes.

**Features**

This handle is particularly suitable to be produced in light colours. The glossy finish guarantees perfect cleaning.

**Technical data**

Tensile stress and impact strength: F1, F2, L1 and L2 values reported in the table are the result of breaking tests carried out with the appropriate dynamometric equipment under the test conditions shown in the figure with ambient temperature. The tests have revealed that the special technopolymer used can absorb very strong shocks, with no damages, thanks to its high-resilience.



\* Complete with colour index, example: M.843/140 B-M8-C2



Standard Elements						Main dimensions	Threaded bosses	F <sub>1</sub>	F <sub>2</sub>	L <sub>1</sub>	L <sub>2</sub>	Weig						
C9	C2	C3	C4	C5	C6													
Code						Description	L	f	h	B	I	d <sub>6H</sub>	p	[N]	[N]	[J]	[J]	g
138101	138102	138103	138104	138105	138106	M.843/100 B-M6*	103	86±0.5	46.5	17	26	M6	12	4000	7000	50	120	52
138121	138122	138123	138124	138125	138126	M.843/140 B-M8*	138	117±0.5	54	20	30	M8	13	4000	5000	50	120	80
138141	138142	138143	138144	138145	138146	M.843/200 B-M8*	200	179±1	62	20	30	M8	13	3000	3500	27	80	105
138161	138162	138163	138164	138165	138166	M.843/320 B-M8*	322	300±1	64	22	32	M8	13	2000	3000	25	75	157



ELESA and GANTER models all rights reserved in accordance with the law. Always mention the source when reproducing our drawings.

**STANDARD MACHINE ELEMENTS WORLDWIDE**